

# Preliminary Outcomes for Equality and Diversity groups 2010/11

data source: ProAchieve LR LSC FE Success rate reports 3/11/2011

This report examines outcomes in three sections:

**Section 1** : success rate trends in each protected characteristic category plus deprivation measures;

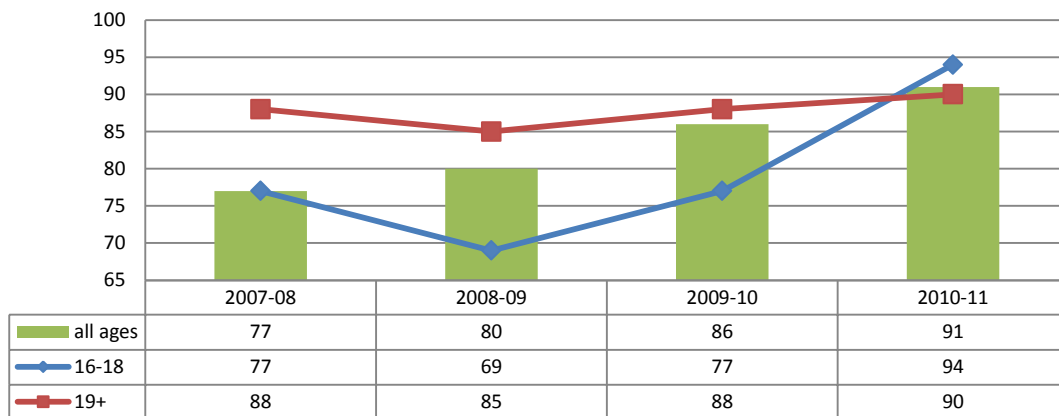
**Section 2** : the success rate gap between protected groups and those not sharing the protected category;

**Section 3** : recruitment patterns

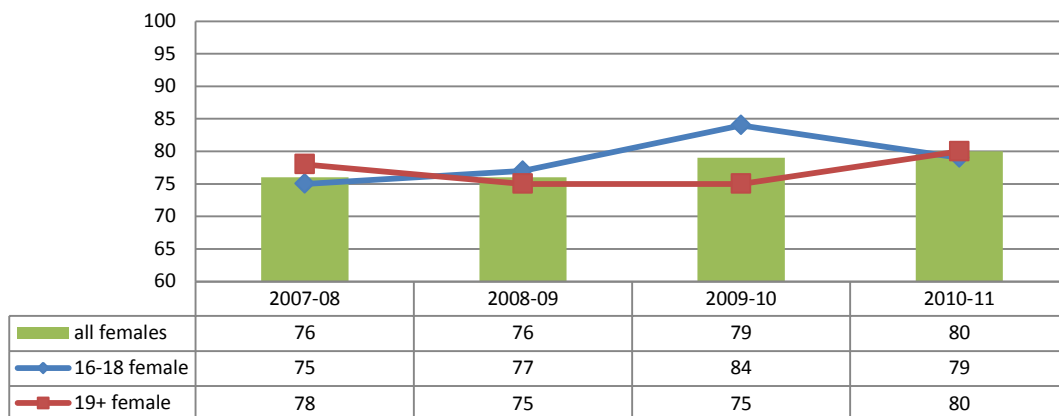
The report includes only students from FE programmes

## Section 1: 4 year Success Rate Trends Protected Characteristics

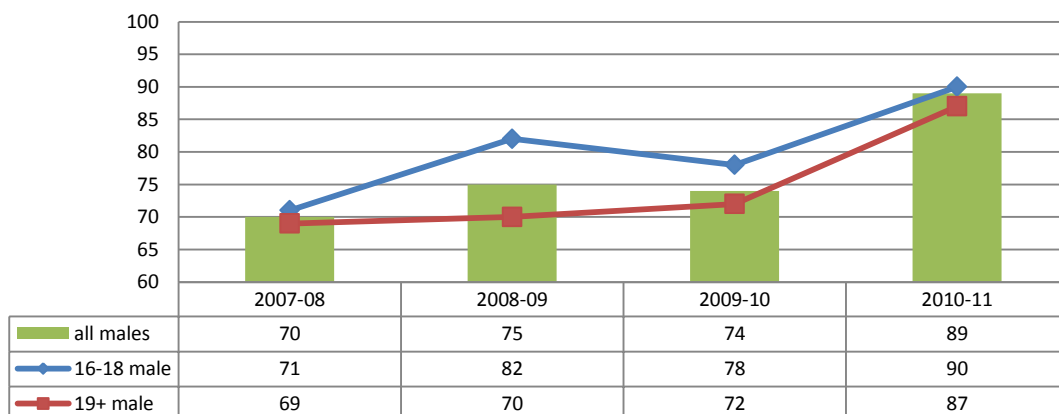
### 1.1 Students declaring a disability or learning difficulty



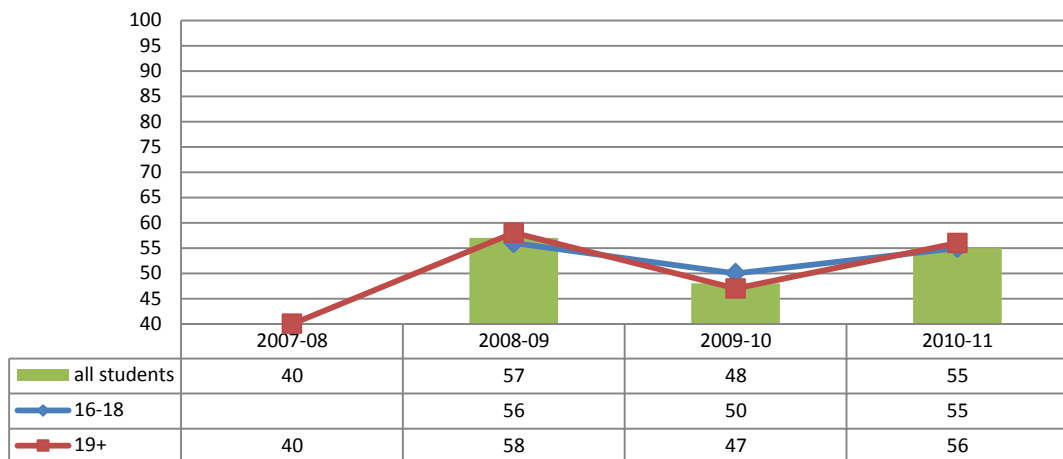
### 1.2a Gender: Female Students



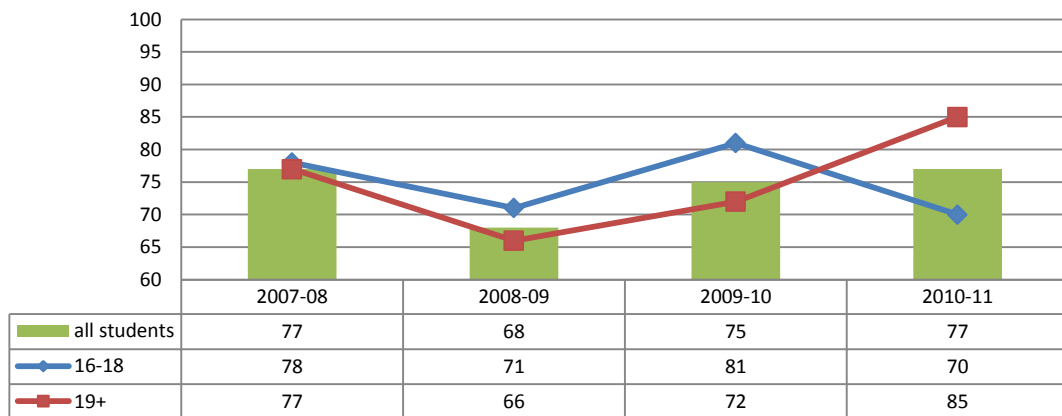
### 1.2b Gender: Male Students



### 1.3 Non white ethnic origin

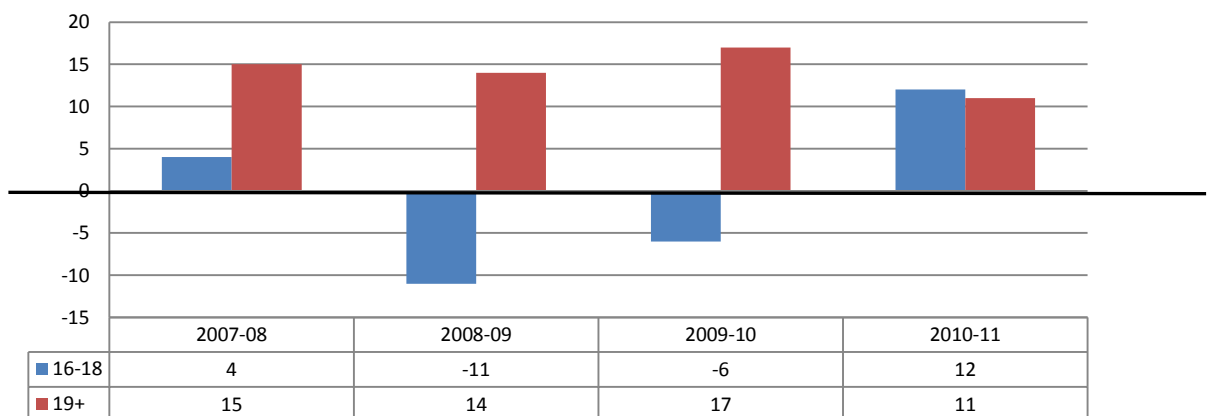


### 1.4 Postcode Uplift

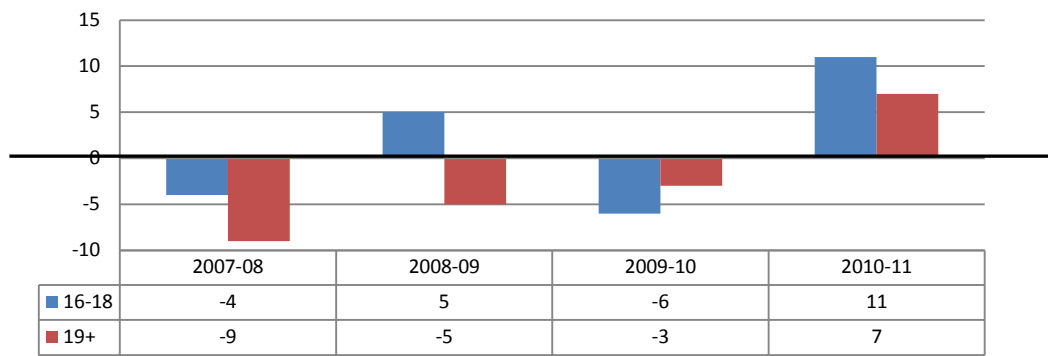


## Section 2 4 year Success rate gap between students belonging to protected characteristic group and those not sharing the protected characteristic.

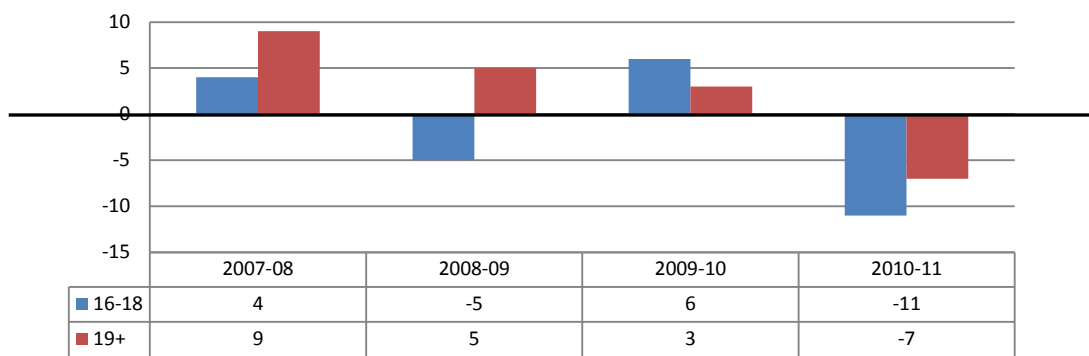
### 2.1 Students declaring a disability or learning difficulty: percentage success rate performance gap by age.



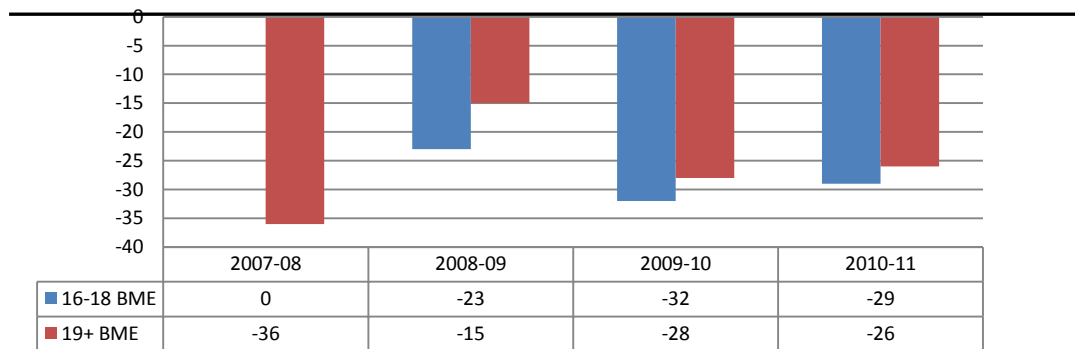
**2.2 Gender: percentage success rate performance gap male vs female students**



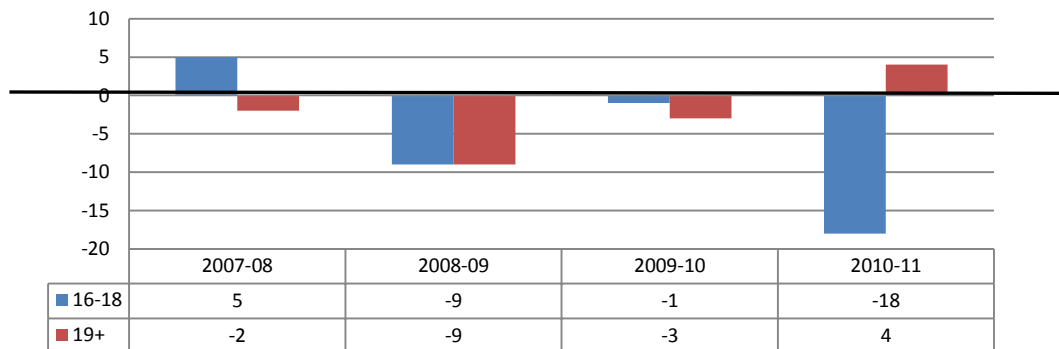
**2.3 Gender: percentage success rate performance gap female vs male students**



**2.4 Race: students from non white ethnic backgrounds: performance gap**

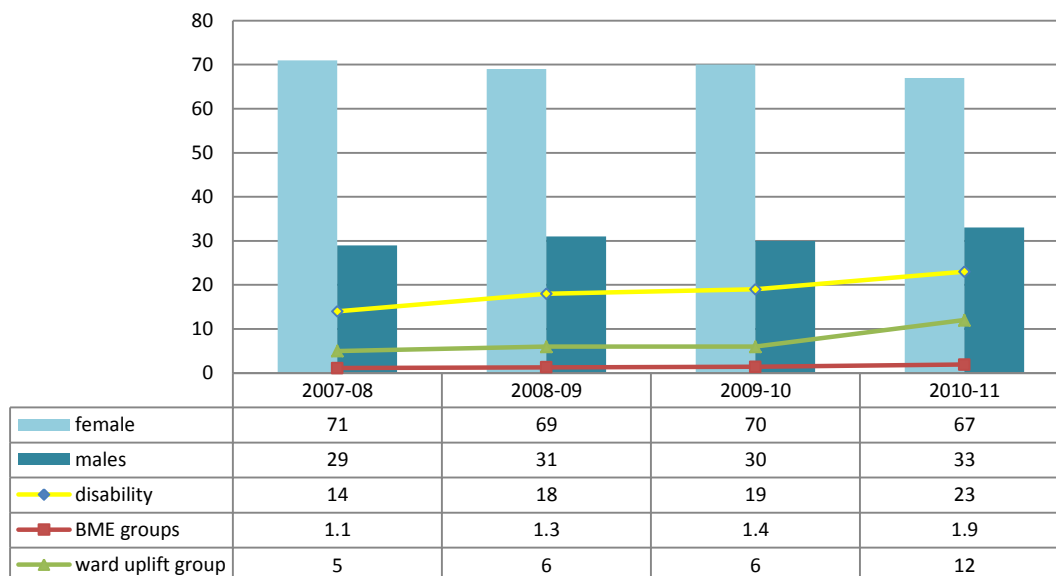


**2.5 Deprivation: students from uplift postcodes: performance gap**



## Section 3: Recruitment Trends

### 3.1 Students with protected characteristics as a percentage of FE student population



### Disability and Learning Difficulty – detailed success rates

Disability	16-18		19+	
	success rate	number	success rate	number
hearing	100	13	80	3
mental health			100	2
emotional/behavioural	100	4		
mobility	100	1	67	9
medical	92	12	90	21
visual			83	6

Learning difficulty				
asperger's			100	1
autism	100	3	100	1
multiple			100	2
dyscalcula	100	2		
dyslexia	96	27	85	20
MLD all provision	89	13	83	6
MLD discrete provision	100	15	96	57
SLD discrete provision			100	7

### Ethnicity – detailed success rates

ethnicity	16-18			19+		
	success rate	number	enrolments	success rate	number	enrolments
african	100	2	2			
white/asian	0	1	5	0	1	3
white/black caribbean	100	1	1	100	1	1
chinese	100	1	1	100	1	1
other mixed	100	2	2	0	1	1
indian				100	1	1
other black				100	1	1
<b>totals (number/enrolments)</b>		<b>7</b>	<b>11</b>		<b>6</b>	<b>8</b>



